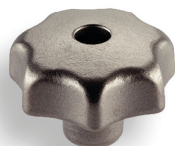


Sterngriffe DIN 6336 mit Sackloch und Gewinde Star Grips



Artikel Nr. Article No.	Gwinde Thread	d	h
Grauguß			
SG006G	M6	32	21
SG008G	M8	40	26
SG010G	M10	50	34
SG012G	M12	63	42
SG016G	M16	80	52
Edelstahl			
SG006V	M6	32	21
SG008V	M8	40	26
SG010V	M10	50	34
SG012V	M12	63	42
SG016V	M16	80	52

Grauguss, sandgestrahlt oder geremelt

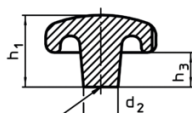


Bild 1

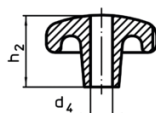


Bild 2

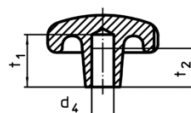


Bild 3

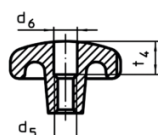
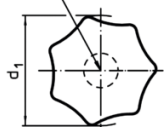


Bild 4

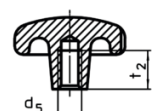


Bild 5